

# Introduction to Counseling & Clinical Psychology Department

劉志如



國立東華大學  
National Dong Hwa University



# Welcome to join our big family

## Undergraduate

### Native program

- All the required courses, selected-courses are offered in Chinese

### International program

- All the required courses have to study in English, selected-courses can choose Chinese courses

## Graduate

Fundamental Psychology

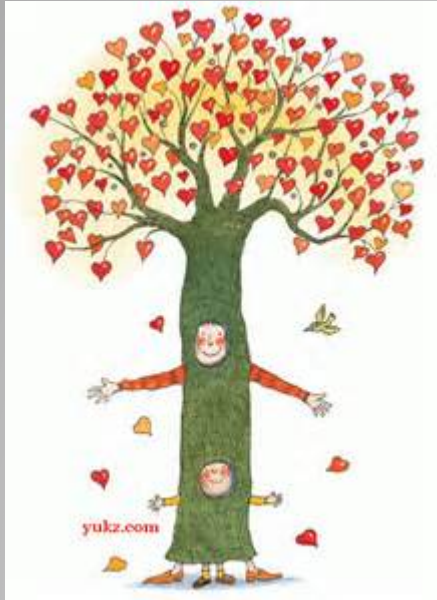
Counseling Psychology

Clinical Psychology

## Graduate International Program

For International students only (teaching in English)

Program structure



- 在這個地方你可以期待什麼？

What you can look forward in this place

- 在這個地方你可以如何裝備自己？

What you can do to prepare yourself in this place

- 期待**四年後**的形象？

What looking forward you will be **four years later**



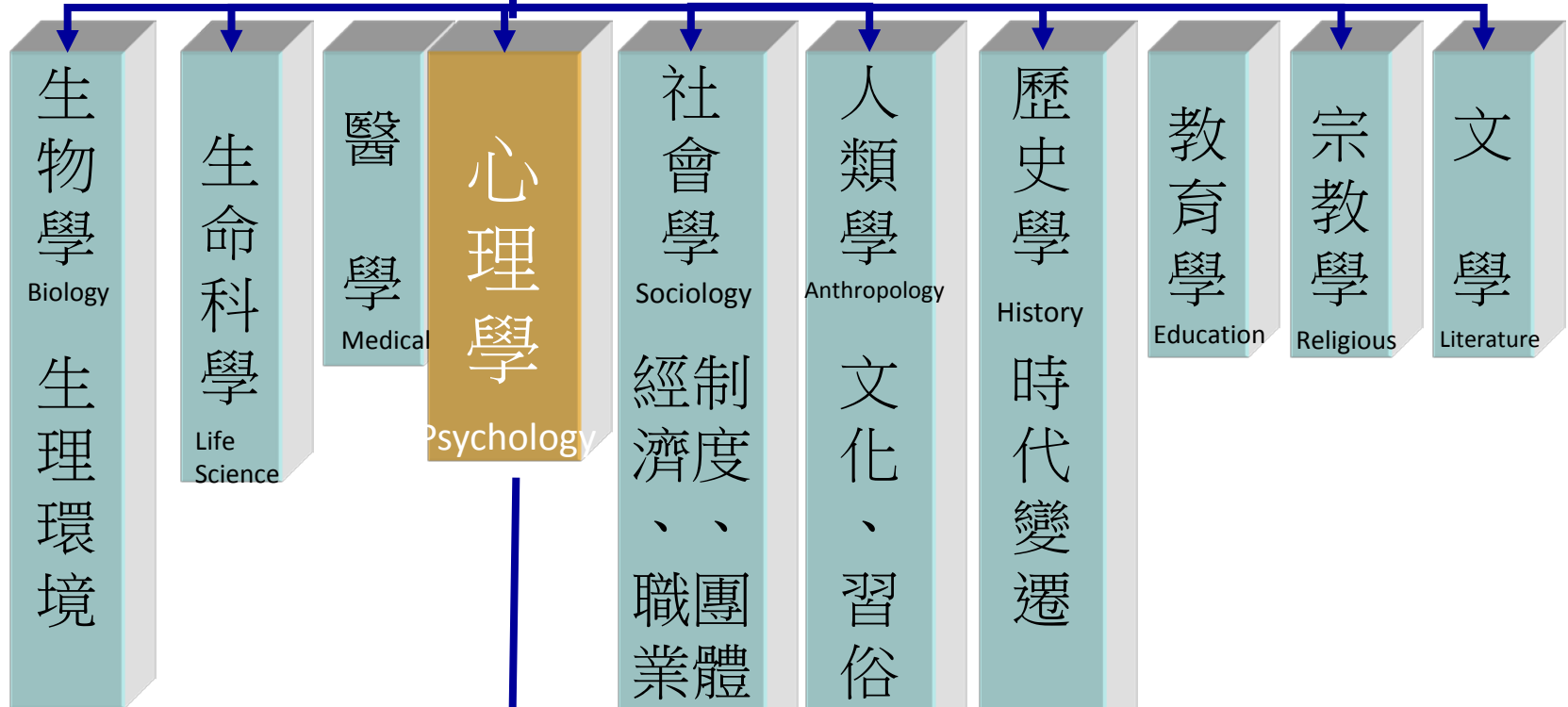
# 心理學在學門中所在的位置 (一)

## Psychology in Academy

find the truth, appearance  
reflection and thinking

哲學philosophy

發現事物的真理、本貌、  
反省與思考



基礎心理學  
Foundational Psychology

應用心理學  
Applied Psychology

整合取向  
Integration Approach

# Counseling and Clinical Psychology

## Psychology 心理學

### Foundational Psychology

基礎心理

- Statistic, Psychological Testing, Psychological Research
- Physiological Psychology, Neuropsychology
- Developmental Psychology
- Sensation and Perception
- Cognitive Psychology thinking , memory, language, problem solving skills, Decision making
- Learning Psychology
- Personality Psychology
- Social Psychology
- Abnormal Psychology
- Experimental Psychology, methodology

### Applied Psychology

應用心理

- **Clinical Psychology**
- **Counseling psychology**
- Guidance deal with difficulties, power of grow up
- Health Psychology
- Educational Psychology
- industrial and organizational psychology
- consuming psychology, advertisement psychology
- Forensic Psychology , Criminal Psychology
- Military Psychology, aeronautical psychology

### Integration Approach

整合取向

- Cognitive science
- Artificial intelligence
- Multi-Cultural Psychology
- Positive Psychology

- Department Educational goals and characteristics  
本系教育目標與特色
- Introduction to Environmental and Equipment  
環境設備
- Introduction to Faculties 認識教師
- Introduction to program 簡介學程制
- Career route 為自己安排生涯路徑

諮商與臨床心理系



- exploring relevant issues of research in counseling and clinical psychology 諮商與臨床研究
- emphasizing counseling strategies and clinical skills in the treatment of special problems for minority groups 關懷弱勢族群
- developing the counseling and clinical psychology disciplines in both theory and practices 理論實務並重
- emphasizing the science-practitioner orientation in teaching and research 科學實踐取向

## 本系特色Our Features



# Educational goals 教育目標

- 1.The department will train students to have a basic knowledge of psychology both in the humanities and the sciences; students will be able to apply their knowledge critically. 應用心理學知識
- 2.The department will focus professional training as well as lifetime education. 終身學習的態度養成
3. The department will focus on the students' ability to communicate and will promote their ability to provide social services. 人文關懷的胸襟
4. The department will help students to expand their global and multicultural thinking. 全球視野在地實踐





# Teaching equipments 教學環境設備簡介

個別諮商室，共4小間，位置：人社二館B301（共B301  
（counseling Room, location: Humanities and Social Sciences Building II B301）



個諮室觀察窗及測驗櫃

# Teaching equipments 教學環境設備簡介

- 團體諮商室，位置：人社二館共B304（Group Counseling Room, location: Humanities and Social Sciences Building II B304）



- 控制室，位置：人社二館共B303（Group Counseling Room, location: Humanities and Social Sciences Building II B303）





# Teaching equipments 教學環境設備簡介

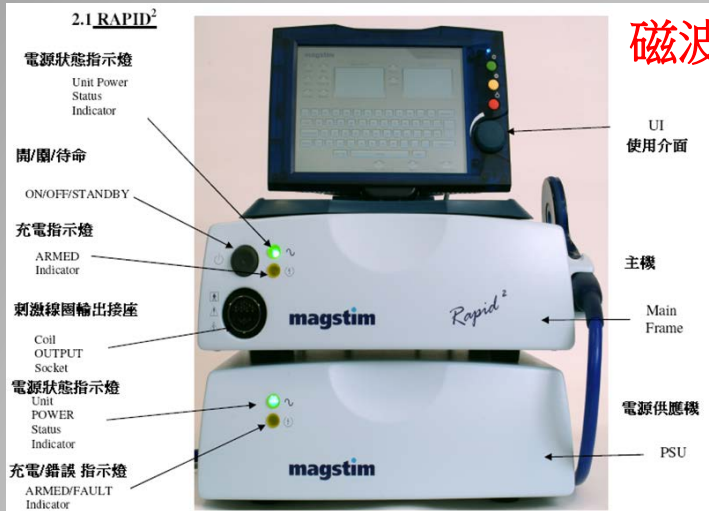
- 兒童遊戲室，位置：人社二館共B206（Play therapy Room, location: Humanities and Social Sciences Building II B206）



- 電腦教室位置：人社二館共B207（PC Room, location: Humanities and Social Sciences Building II B207）



# Teaching equipments教學環境設備簡介



磁波刺激器(TMS)



腦波耳機



腦波儀 (EEG)





# 師資陣容強大

- 基礎心理學組 Fundamental Psychology



周東山教授 Chou, Tung-Shan Ph.D , Statistical methods scientific study if religion



周育如教授 Chou, Yu-Ju Ph.D , TMS, EYE movements



藍玉玲教授 Lan, Yu-Ling Ph.D , measurement and statistics, program evaluation



劉劭樺教授 Liu, Shiau-Hua Ph.D , 本組召集人 EEG, Cognitive neuroscience, visual psychiphusics



李明霓教授 Lee, Ming-Ni Ph.D , Social and cultural psychology, dreaming and consciousness research





林美珠教授 Lin, Mei-Ju Ph.D , Narrative & psychological study, counseling process, dream work



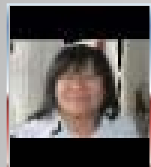
王純教授 Wang, Chun-Chuan Ph.D , person-centered approach, grief counseling



林繼偉教授 Lin, Chi-Wei Ph.D , individual counseling, personality psychology, psychological Assessment



陳淑瓊教授 Chen, Shu-Chung Ph.D , individual/group counseling, trans-cultural counseling



劉志如教授 Liu, Chih-Ju Ph.D , play therapy, adolescence psychotherapy



賈紅鶯教授 Chia, Hong-Ying Ph.D , 本組召集人  
Family therapy, postmodern therapy



王沂釗教授 Wang, Yi-Chao Ph.D , counselor training and supervision, mental health, parenting education



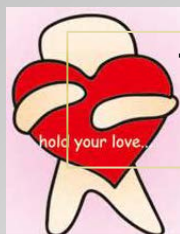
# 師資陣容：臨床心理學組

## Clinical Psychology

李維倫教授 Lee, Wei-Lun Ph.D , phenomenological psychology, existential psychotherapy/hypnotherapy



劉彥君教授 Liu, Yen-Chun Psy. D , 本組召集人 clinical psychology, couple and family therapy



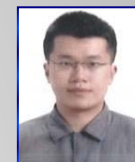
Theodore Mazarakis Ph.D , Sleep disorders, psychopharmacology



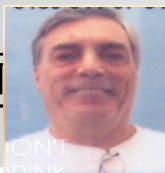
蔣士光教授 Chiang, Shih-Kuang Ph.D , neuropsychology, medical education



翁士恆教授 Wong, Shy-Herng Ph.D , developmental pathology, children psychodynamics



兼任教師



Robert Ross , Counseling psychology, Drug abuse



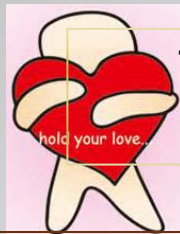
# International Program



陳淑瓊教授 Chen, Shu-Chung Ph.D , **Convener of this program**  
individual/ group counseling, trans-cultural counseling



李明霓教授 Lee, Ming-Ni Ph.D , Social and cultural psychology,  
dreaming and consciousness research



Theodore Mazarakis Ph.D , Sleep disorders,  
psychopharmacology



蔣士光教授 Chiang, Shih-Kuang Ph.D , neuropsychology,  
medical education



翁士恆教授 Wong, Shy-Herng Ph.D , developmental  
pathology, children psychodynamics



兼任教師



Robert Ross , Counseling psychology, Drug abuse





- 一、本系學士班最低畢業學分數128學分
- 二、本系學士班主修領域(major)，由以下學程組成
  - 1.社會科學基礎學程(21學分)
  - 2.諮商與臨床心理學核心學程(27學分)
  - 3.本系學士班專業選修學程(a、b專業選修學程二選一)
    - a.臨床與諮商心理學通論學程(21學分)
    - b.認知與心理計量學程(21學分)
- 三、通識43 學分(含體育)

※本系主修學生應修畢：1.社會科學基礎學程學分+諮商與臨床心理學核心學程學分+（臨床與諮商心理學通論學程、認知與心理計量學程二選一）

※完成主修學程約69學分+通識43學分後，距畢業學分餘16學分可任意修習本校所開課程

## 學程制度

# Courses Map

Foundation program  
of Psychology

Core Program of  
Clinical and Counseling  
Psychology

Program of Clinical and Counseling Psychology

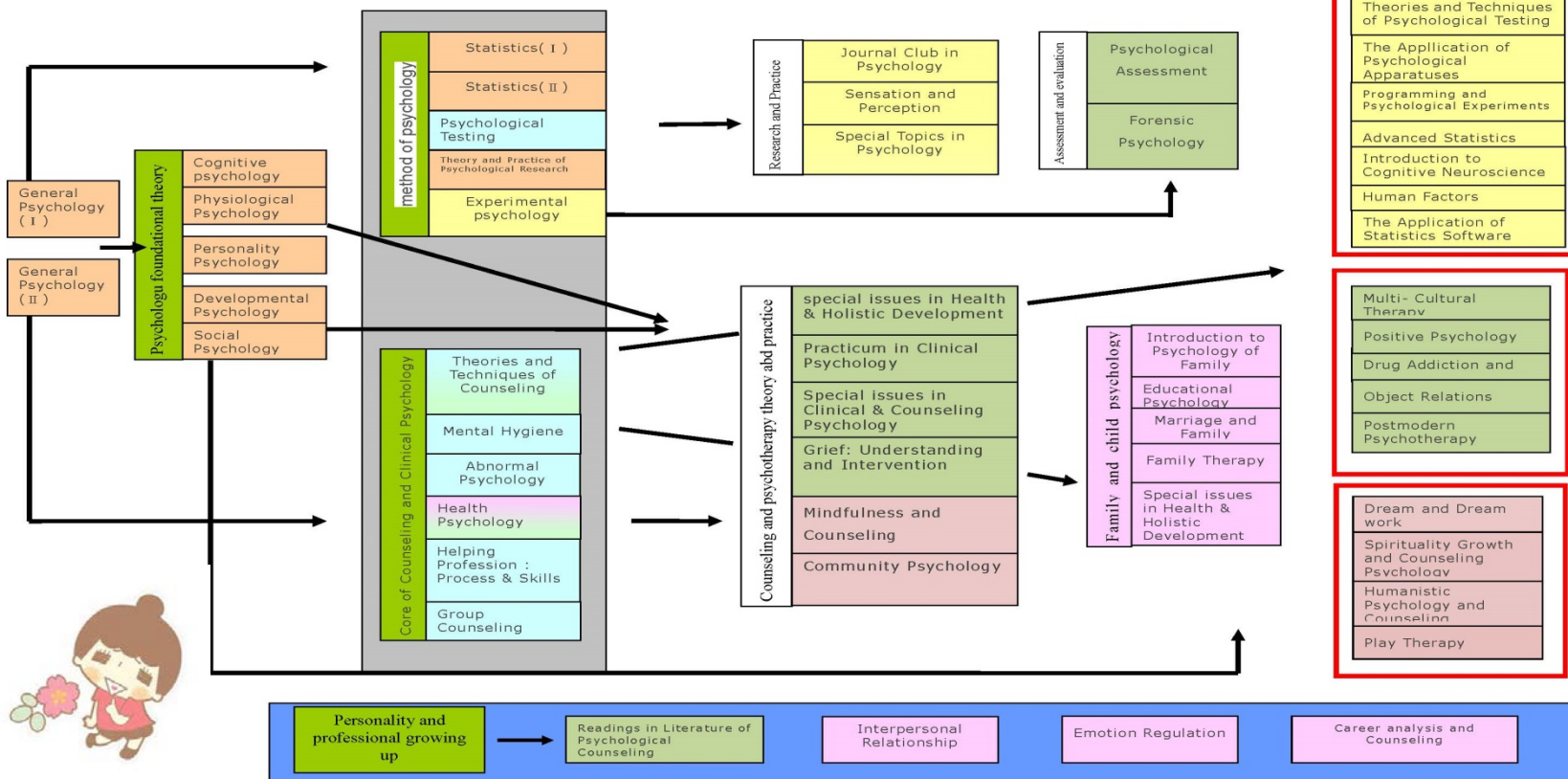
Program of Cognition and Psychometrics

freshman

Sophomore

Junior

Senior



# International program

## • Program and credits

- International Undergraduate Foundation Program of Psychology (21 credits)
- International Undergraduate Core Program of Psychology (27 credits)
- International Undergraduate Courses (21 credits)

## • Rules for elective

- All of the 3 program
- All the required credits have to study in English, selected- courses can choose Chinese courses

## • Required credits for graduation

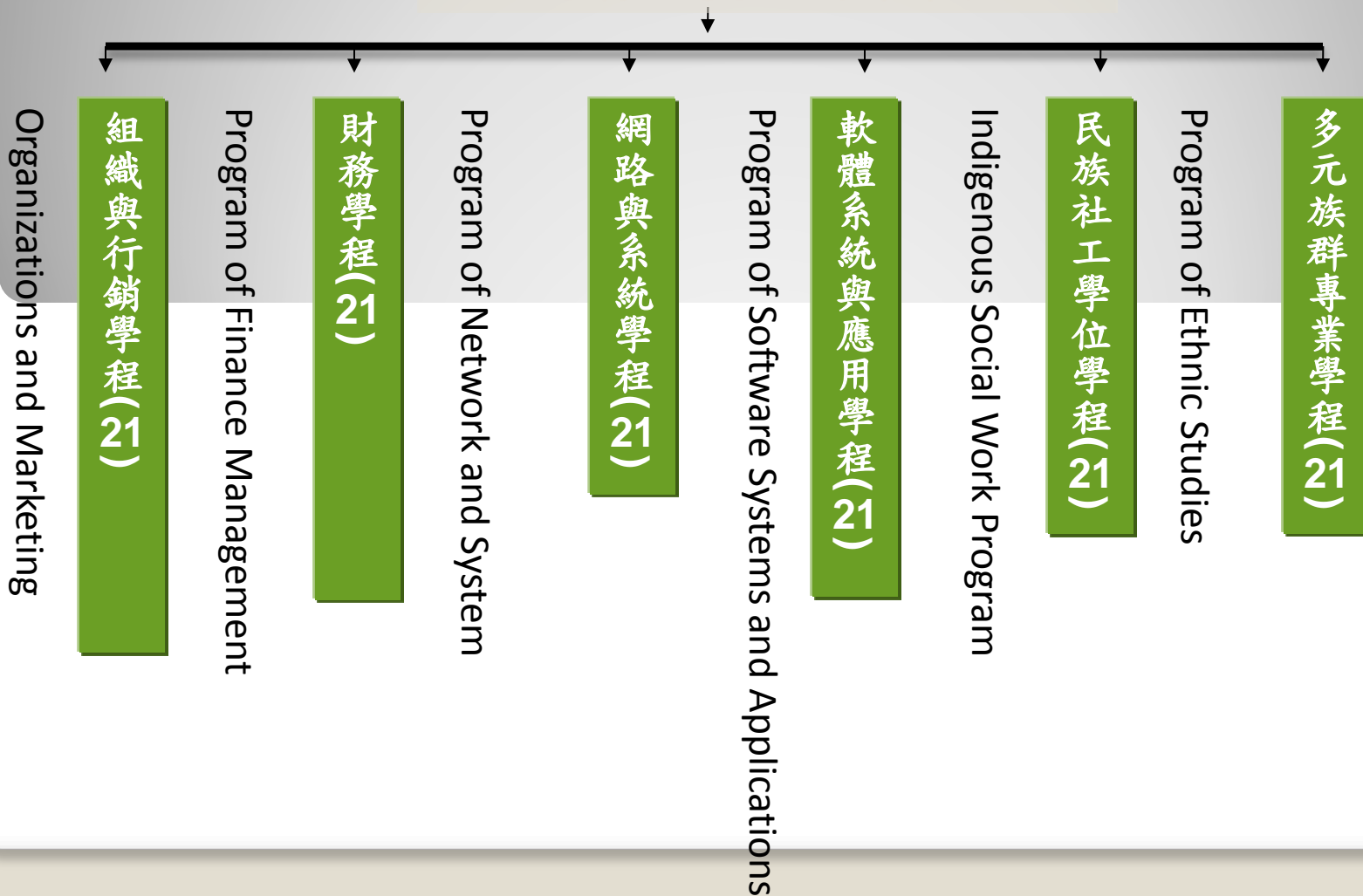
- Students studying for the bachelor's degree shall meet the General Education requirements and the department requirement (Fundamental Course Program and Core Course Program). A minimum of 128 credits, including no less than 21 credits of concentration elective courses, is required for graduation.
- Students in General Programs and Local students in International Programs:  
Languages (9 credits total; 3 credits for Chinese and 6 credits for English), Physical Education (4 credits total), Service Learning (2 credits total), and Elective Core Courses (28 credits total)
- International students: Languages (9 credits total; 6 credits for Mandarin Chinese and 3 credits for Elective Foreign Languages), Physical Education (4 credits total), Service Learning (2 credits total), and Elective Core Courses (28 credits total).

※獲核准通過選讀本系國際學士班者，可於大二優先申請轉入本系

## 學程的優點-

可依自己興趣搭配不同學系的學程

建議可選修之外系學程



- **Community Service**

- Nan-Hua adoption-guidance program 南華認輔（李維倫老師）
- zootherapeutics 動物治療（李維倫老師）
- Early intervention 西林早療服務（翁士恆老師）
- Service learning

- **(graduation) monograph ( learning outcomes )**

- Academic approach
- Social care performance
- Multiple applications of creative invention



**Theories and practices**



# 生涯發展進路圖

## 諮商與臨床 心理治療師

## 心理學 研究與應用

## 社會福利與政策 相關領域

## 人事服務與教育 相關領域

應修學程：  
1. 社會科學基礎學程  
2. 諮商與臨床核心學程  
3. 臨床與諮商通論學程  
4. 認知與心理計量學程  
5. 其他相關課程選修

發展方向：  
1. 臨床心理師主要服務場所為醫院、監獄或可自行開業  
2. 諮商心理師主要服務場所為學校、社區、監獄或自行開業

應修學程：  
1. 社會科學基礎學程  
2. 諮商與臨床核心學程  
3. 認知與心理計量學程  
4. 建議加選外系學程  
(1) 軟體系統與應用學程  
(2) 網路與系統學程

發展方向：  
1. 心理相關碩博士專研  
2. 心理學儀器操作與設計  
3. 心理學評量衡鑑與統計相關軟體開發  
4. 人因工程開發與諮詢

應修學程：  
1. 社會科學基礎學程  
2. 諮商與臨床核心學程  
3. 臨床與諮商通論學程  
4. 建議加選外系學程  
(1) 社會工作學程  
(2) 法律學程

發展方向：  
1. 社會工作人員  
2. 社會福利政策  
3. 人事行政  
4. 司法相關、矯正人員、含觀護人、教誨師等  
5. 相關碩士深造

應修學程：  
1. 社會科學基礎學程  
2. 諮商與臨床核心學程  
3. 臨床與諮商通論學程  
4. 健康生活與全人發展學程  
5. 建議加選外系學程  
(1) 法律學  
(2) 成人教育學程

發展方向：  
1. 教師  
2. 生涯轉銜（人力銀行）  
3. 教育訓練人員

相關說明：  
獲得心理治療師執照需相關碩士畢業並全職實習一年始得考照。

相關說明：  
結合心理學與電腦能力的發展

相關說明：  
1. 社會工作可加考社工師執照  
2. 社會福利與人事服務人員暨司法相關服務工作部分需通過公務人員考試（含人事行政、社會福利行政、觀護人、教誨師等）

相關說明：  
1. 需通過教師檢定  
2. 結合心理學與人力規劃，協助企業人力評估與人力篩選  
3. 協助企業教育訓練相關服務工作部分需通過公務人員考試（含人事行政、社會福利行政、觀護人、教誨師等）

### 學生基本能力

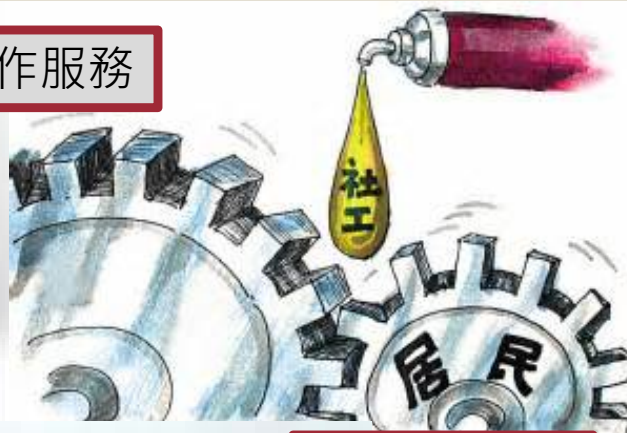
- ◎◎● A. 應用專業知識瞭解現象與問題解決的基本能力。
- ◎● B. 公民關懷與倫理思考的能力。
- ◎ C. 生涯規劃與自我發展的能力。
- ◎◎● D. 傾聽、統整、與表達溝通的能力。
- ◎◎● E. 正向與創新的能力。

### 註：

- 諮商與臨床心理治療師應具備能力
- ◎ 心理學應用與研究應具備能力
- ◎ 社會福利與政策相關領域應具備能力
- 人事服務與教育訓練相關領域應具備能力



社工工作服務



機構輔導人員



輔導人員



法院觀護人



諮商心理師

人力資管理人員



體驗教育訓練人員



臨床心理師



臨床心理 — 初步分析及諮詢

1. Understand the rules, you can become active person
2. The opportunity is to fight for yourself—SAY “YES”
3. Precipitation and meditation, be your own master
4. Construction of appropriate interpersonal networks

**Equip yourself**





- Give yourself an expectation,  
an approach



The future me in four years